



2017 MELGES 40 GRAND PRIX EVENT 2

Valencia, Spain 11th – 14th October 2017

SAILING INSTRUCTIONS

1 RULES

- 1.1 The regatta will be governed by the rules as defined in The Racing Rules of Sailing.
- 1.2 No national authority prescriptions will apply.
- 1.3 Recorded video and images from any press, media and/or support boat, or data/video of positioning from electronic devices cannot be used as evidence during the hearings and may not be a reason for a redress request. This changes the RRS 60.1 (b) - 63.3 - 63.6.
- 1.4 If there is a conflict between languages, the English version shall prevail.
- 1.5 **CODE OF CONDUCT - professional foul.**

Competitors shall comply with any reasonable request from a regatta official, organizing committee member, Class official and other competitors, including the participation as party or witnesses in protest hearing or investigations. It is mandatory to participate in the social events and any official meetings. The penalty for a breach of this SIs can be a scoring penalty but also a disqualification or other disciplinary actions.

2 NOTICES TO COMPETITORS

Notices to competitors will be posted on the Official Notice Board located **near the Race Office at the Regatta Village.**

3 CHANGES TO SAILING INSTRUCTIONS

Any change to the SIs will be posted before 09.00 on the day it will take effect, except that any change to the schedule of races will be posted by 20.00 on the day before it will take effect.

4 SIGNALS MADE ASHORE

- 4.1 Signal made ashore will be displayed at the flagpole located **near the Race Office at the Regatta Village.**
- 4.2 (a) When flag AP is displayed ashore, "1 minute" is replaced with "not less than 30 minutes" in the race signal AP.
(b) When together with the signal as per SI 4.2a) the letter "H" is displayed the competitors are forbidden to leave the dock until the signal is lowered.
- 4.3 When flag Y is displayed ashore, RRS 40 applies at all times while afloat. This changes RRS Preamble of Part 4.

5 SCHEDULE OF RACES

5.1 Dates of racing:

MONDAY, October 9th

14.30 – 18.00 – Registration and Weigh-in

TUESDAY, October 10th

09.30 – 18.00 – Registration and Weigh-in

18.30 – Opening Ceremony

WEDNESDAY, October 11th - RACE DAY 1

12.00 – Skipper's Briefing @ Regatta Village

14.00 – FIRST WARNING SIGNAL

THURSDAY, October 12th - RACE DAY 2

RACES – FIRST WARNING SIGNAL TIME TBA

FRIDAY, October 13th - RACE DAY 3

RACES – FIRST WARNING SIGNAL TIME TBA

SATURDAY, October 14th - RACE DAY 4

RACES – FIRST WARNING SIGNAL TIME TBA

PRIZE GIVING

5.2 Number of races:

A maximum of **10 races** is planned. A maximum of 3 races are planned on each sailing day.

5.3 The First Warning Signal on Day 1 is scheduled for 14.00.

5.4 <spare>

5.5 On the last day of the regatta no warning signal will be made after 17.00.

6 CLASS FLAG

Class Flag will be the "MELGES 40 GRAND PRIX" Flag.

7 RACING AREAS

Races will be held in the **water in front of the town hosting the event.**

8 THE COURSES

8.1 Course 1

Start – W – WO – Gate – W – WO – Finish (Downwind).

8.2 Course 2

Start – WI – W – WI – Gate – WI – W – WI – Finish (Downwind).

The Race Committee will lay Mark W approximately 6 lengths to windward of Mark WI. Boats shall pass in order Marks WI, W and then WI to port before proceeding to the Gate. In the event of a change of course under RRS 33, Mark WI will be a Mark Boat displaying Mike flag without sound signal.

8.3 Course 3

Start – WI – W – WO - WI – Gate – WI – W – WO - WI – Finish (Downwind).

The Race Committee will lay Mark W approximately 6 lengths to windward of Mark WI. Boats shall pass in order Marks WI, W, WO and then WI to port before proceeding to the Gate. In the event of a change of course under RRS 33, Mark WI will be a Mark Boat displaying Mike flag without sound signal.

8.4 No later than the warning signal, the race committee signal boat will display the course number and the approximate compass bearing of the first leg.

8.5 Courses can be shortened provided that a shortened race has a minimum of 3 legs.

The legs described as follows are not legs for the purpose of SIs 8.5:

W – WO; WI – W, W – WI, WO – WI.

This changes rule 32.

9 MARKS

9.1 Marks W will be cylindrical inflatable RED buoy.

Marks WI will be cylindrical inflatable WHITE buoy.

9.2 Marks WO will be cylindrical inflatable WHITE buoy.

9.3 Marks GS / GP will be cylindrical inflatable WHITE buoy.

9.4 The starting Mark will be RC boats on both end of the line.

The finishing mark will be cylindrical inflatable RED buoy.

9.5 All the marks, except the gate and the finishing mark, shall be left to port.

9.6 New marks **W**, as described in SIs 12.1 will be cylindrical inflatable YELLOW buoy.

New marks **WO**, as described in SIs 12.1 will be cylindrical inflatable WHITE buoy.

New mark WI will be a Mark Boat displaying Mike flag without sound signal OR a WHITE buoy.

9.7 A race committee boat signaling a change of a leg of the course is a mark as provided in SI 12.2.

10 AREAS THAT ARE OBSTRUCTIONS

If applicable, sailing forbidden area will be notified on the Official Notice Board.

When these areas are notified, they will be considered “obstruction” as per definition & related application of RRS 19 & 20.

11 THE START

11.1 Races will be started using RRS 26 with the warning signal made 5 minutes before the starting signal.

11.2 The starting line will be between a staff displaying an orange flag on the RC starting vessel and a staff displaying an orange flag on the RC pin-end vessel.

11.3 A boat starting later than 4 minutes after her starting signal will be scored DID NOT START without a hearing. This changes rule A4, A5 and 35.

11.4 The Race Committee may communicate by radio **VHF 71** individual and general recalls.

In such case, bow numbers, sail numbers or boat names may be called out for their identification.

Delay in the radio communication of these calls, or the order in which they are made, or any omission or failure in the emission or reception of these, shall not be grounds for a request for redress. (This modifies RRS 62.1.(a)).

This rule does not reduce, modify or exonerate each boat’s responsibility to start in accordance with the RRS.

11.5 <spare>

11.6 Boats to be scored BFD or UFD will be hailed as described in SIs 11.4. If hailed, such boats shall remove themselves from the race course at the first reasonable opportunity. Failure to do so will result in a black flag umpire penalty per SIs Q3.1(c), at which time the penalized boat(s) shall promptly leave the course area.

12 CHANGE OF THE NEXT LEG OF THE COURSE

12.1 To change the next leg of the course, the race committee will lay a new mark (or move the gate and/or the finishing line) and remove the original mark as soon as practicable. Offset mark will be re-located.

Any change to the position of the gate or the finish line will be signaled at mark W or WO. This does not change the obligation to leave mark WI to port.

If the Race Committee decides to change the position of the leeward mark (gate), the original gate marks will be relocated. If the Leeward mark is to be only one mark, this mark shall be left to port.

When in a subsequent change a new mark is replaced, it will be replaced by an original mark.

- 12.2** Except at a gate, boats shall pass between the race committee boat signaling the change of the next leg and the nearby mark, leaving the mark to port and the race committee boat to starboard. This changes RRS 28.1.

13 THE FINISH

- 13.1** The finishing line will be between a staffs displaying an orange flag on the RC vessel and a staff displaying an orange flag on the RC pin-end vessel.

In case of absence of the pin-end vessel the finish line will be between a staff displaying an orange flag on the RC vessel and the finishing mark as described in SIs 9.4.

14 PENALTY SYSTEM

- 14.1** IM40CR H.3.1 (a) is deleted and substituted with:

RRS 44.1(a) and 44.2 are changed as so the penalty shall be a One-turn penalty including one tack and one gybe.

RRS 44.1 is changed to read:

44.1 Taking a Penalty

(a) A boat may take a One-Turn Penalty when she may have broken a rule of Part 2 while racing or rule 31.

(b) However, if a boat caused injury or serious damage or gained a significant advantage in the race or series by her breach her penalty shall be to retire.

RRS 44.2 is changed to read:

44.2 One-Turn penalty

After getting well clear of other boats as soon after the incident as possible, a boat takes a One- Turn Penalty by promptly making the required turn in the same direction, including one tack and one gybe. However, unless the course is shortened to finish at the windward mark, penalties within the zone of the windward mark or penalties on the offset leg may be delayed and taken as soon as possible on the downwind leg. When a boat takes the penalty at or near the finishing line, she shall sail completely to the course side of the line before finishing.

15 TIME LIMITS AND TARGET TIMES

- 15.1** Time limits and target time are as follows:

<i>Class</i>	<i>Target Time</i>	<i>Time limit</i>	<i>Time Limit for Mark 1</i>
Melges 40	60'	90'	25'

If no boat has passed Mark 1 within the Mark 1 time limit the race will be abandoned. Failure to meet the target time will not be grounds for redress. This change RRS 62.1(a).

- 15.2** The boats not finishing within 15' from the finish of the first boat, will be scored as "Did Not Finished" without a hearing. This change RRS 35, A4 and A5.

16 PROTESTS AND REQUESTS FOR REDRESS

- 16.1** The arbitration hearings and the formal hearings will be held under SIs 16.8

- 16.2** (a) In accordance with NOR 2.9, fleet races will be umpired under ISAF Addendum Q

(b) Umpiring: ISAF Addendum Q is modified to the effect that the Jury may take decision after racing if the incident afloat was unseen.

(c) Protest forms are available at the race office. Protests and requests for redress or reopening shall be delivered there within the appropriate time limit.

(d) The protest time limit is 60 minutes after the last boat has finished the last race of the day or the race committee signals no more racing today, whichever is later.

- 16.3** Notices will be posted no later than 30 minutes after the protest time limit to inform competitors of hearings in which they are parties or named as witnesses.

Hearings will be held in the protest room, located at the Regatta Village.

- 16.4** Notices of protests by the race committee or protest committee will be posted to inform boats under RRS 61.1(b).

- 16.5** (a) Breaches of S.I. 18, 19, 21, 23, 24, 25, 26 will not be grounds for a protest by a boat. This changes RRS 60.1(a). Penalties for these breaches may be less than disqualification if the protest committee so decides.
- (b) Penalties as per SI 16.5(a) will be percentage based on the total number of boats in the fleet. Percentage will be between 10% and 30% and will be governed by RRS 44.3
- (c) The Protest Committee may impose penalties as described in SI 16.5(b), for breaches of Class Rules or other rules.
- (d) If the Protest Committee decides that a breach of a *rule* has had no significant effect on the outcome of the race, it may impose a penalty or make any other arrangement it decides is fair for all boats affected, which may be to impose no penalty.

This change RRS 64.1.

- 16.6** On the last scheduled racing day a request for the reopening of a hearing shall be delivered:
- (a) within the protest time limit if the requesting party was informed of the decision on the previous day;
- (b) no later than 30 minutes after the requesting party was informed of the decision on that day. This change rule 66.

- 16.7** On the last scheduled day of racing a request for redress based on a protest committee decision shall be delivered no later than 30 minutes after the decision was posted. This changes RRS 62.2.

- 16.8** **Arbitration system.** Before the beginning of any hearing, the parties of a protest shall participate in an arbitration hearing with the judge in charge of this subject. The penalized party, by accepting the opinion of the arbitrator, will get minimum 20% penalty. The arbitrator is allowed to consider arbitration system improper for the case and refer the matter to a formal hearing.

During the arbitration hearing witnesses are not allowed except for the Judges that have signaled a blue flag as per SIs Q3.1(d).

The Protest Committee is allowed to accept such a penalties before the beginning of a formal hearing.

The arbitration system procedure can be held (shall be during the last day of races) on the Jury rib during the coming back and on the dock.

- 16.9** (a) <spare>

- (b) Helmsperson

When, while racing, the umpires observe any crew member other than the 'Principal or Relief Helmsperson' steering the boat, they may penalize that boat in accordance with SIs 16.9(a) and Addendum Q4.1(g).

Aiding steering the boat in a situation where it is reasonable to expect that a collision or injury might occur will not be penalized if a boat does not come out in a better position than it would have done otherwise.

However if the umpires observe a crew member aiding steering, and they are not yet certain as to whether this is an infringement, they will signal a warning by displaying a yellow flag and pointing conspicuously to the boat concerned. Only one warning will be made for an incident.

- 16.10** RRS 67 is deleted and substituted with:

- (a) Any issue of liability or claim for damages and/or injuries arising from an incident while a boat is bound by The Racing Rules of Sailing shall be subject to the jurisdiction of the courts and not considered by a protest committee.
- (b) A boat that takes a penalty or retires does not thereby admit liability or that she has broken a rule.

17 SCORING

- 17.1** The scoring system will be the Low Point scoring system.

- 17.2** One (1) race is needed for the regatta to be scored as a single event.

- 17.3** (a) When fewer than 6 races have been completed, a boat's series score will be the total of her race scores.

(b) When 6 or more races have been completed, a boat's series score will be the total of her race scores excluding her worst score.

18 SAFETY REGULATIONS

18.1 A boat that retires from a race shall notify the race committee as soon as possible.

18.2 Boats not leaving the harbor for the races of the day (DNC) shall inform the race office as soon as possible.

18.3 Boats not starting or retiring from a race (DNS - DNF) shall inform the race office or the race committee as soon as possible.

18.4 All boats shall return only to their allocated moorings.

19 REPLACEMENT OF CREW OR EQUIPMENT

19.1 Substitution of competitors will not be allowed without prior written approval of the Race Committee

19.2 Substitution of damaged or lost equipment will not be allowed unless approved by the Race Committee. Requests for substitution shall be made to the committee at the first reasonable opportunity.

20 EQUIPMENT AND MEASUREMENT CHECKS

A boat or equipment may be inspected at any time for compliance with the Class Rules and SIs. On the water, a boat can be instructed by a race committee equipment inspector or measurer to proceed immediately to a designated area for inspection.

21 EVENT ADVERTISING

Boats shall display event advertising supplied by the organizing authority as per Annex 1 of Notice of Race.

22 OFFICIAL BOATS

The official boats will be identified by displaying flags as follows:

Race Committee Boat	Yacht Club flag
Measurer Boat	White flag with a "M"
Media	White flag "PRESS"

23 SUPPORT BOATS

23.1 Refer to IM40CR Part III H.4 *Outside Assistance*.

23.2 Support boats shall be identified with a team flag (min size 40x60cm).

24 <Spare>

25 HAUL-OUT RESTRICTIONS

Boats shall not be hauled out during the regatta except with and according to the terms of prior written permission of the race committee.

26 RADIO COMMUNICATION

Except in an emergency, a boat shall neither make radio transmissions while racing nor receive radio communications not available to all boats. This restriction also applies to mobile telephones.

28 PRIZES

Prices will be given as per Notice of Race.

29 DISCLAIMER OF LIABILITY

Competitors participate in the regatta entirely at their own risk. See rule 4, Decision to Race. The organizing authority will not accept any liability for material damage or personal injury or death sustained in conjunction with or prior to, during, or after the regatta.

28 MEDIA, IMAGES and SOUND

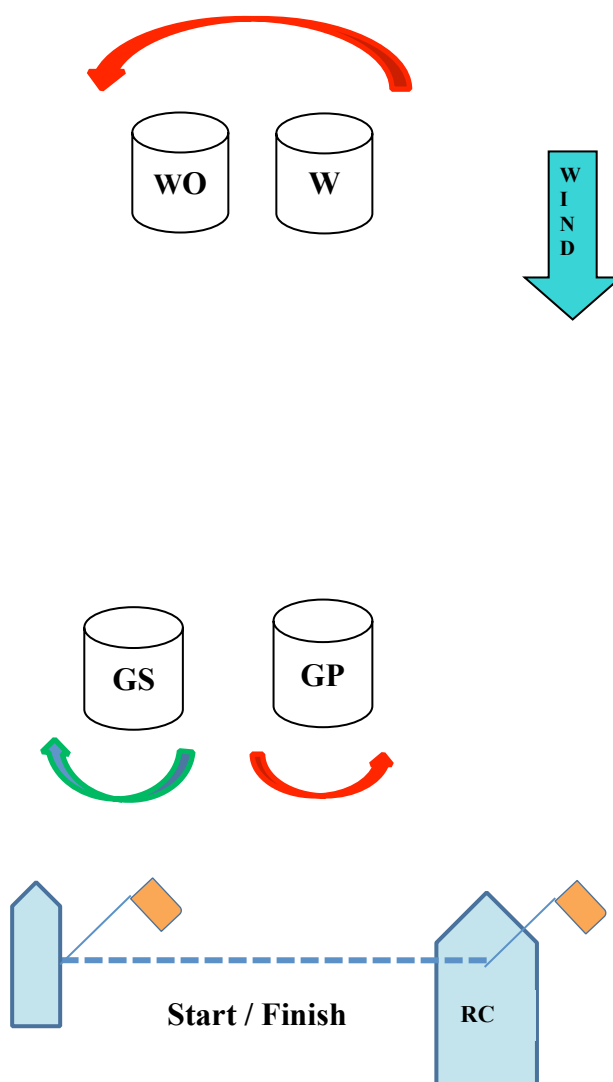
- (a) The OA may require media personnel, equipment and electronic devices to be carried on board at any time.
- (b) The position of these personnel and equipment will be determined by the RC and may be advised verbally.
- (c) The OA shall have the right to use any image, sound recorded and navigation data.

The Race Committee

Appendix A

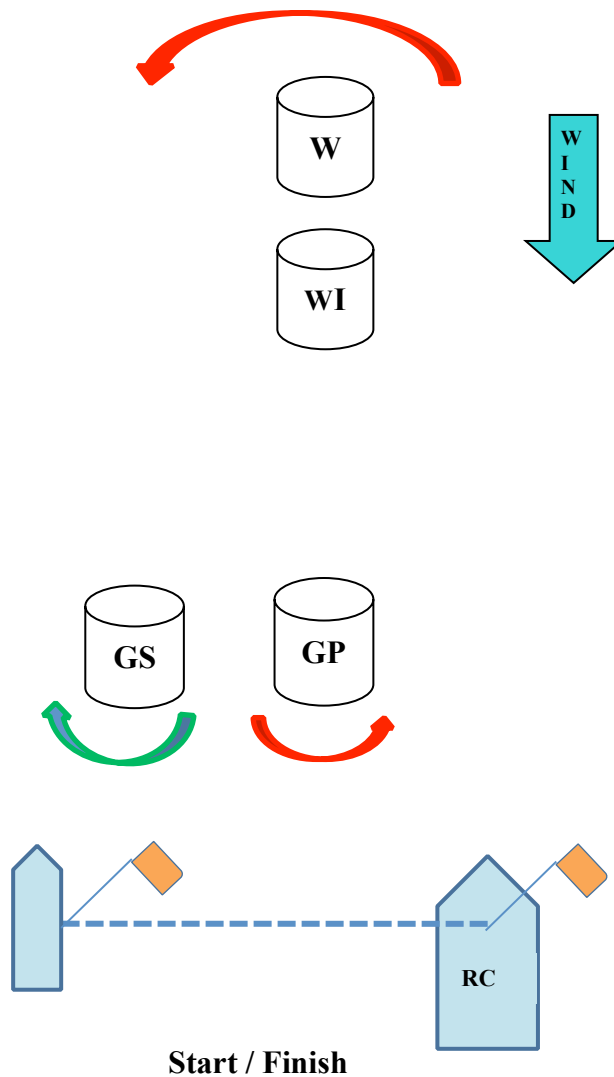
SCHEMATIC DRAWING OF THE COURSE. THE DISTANCES AND MARK POSITIONS ARE NOT IN SCALE.

COURSE 1



Start – W – WO – Gate – W – WO – Finish (Downwind).

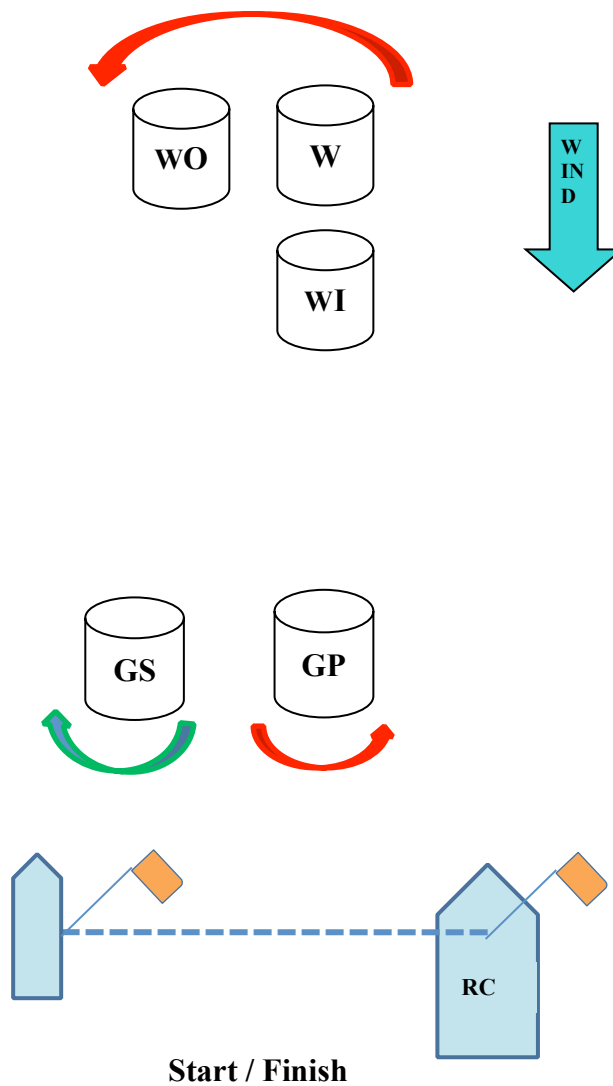
COURSE 2



Start – WI – W – WI – Gate – WI – W – WI – Finish (Downwind).

The Race Committee will lay Mark W approximately 50 meters to windward of Mark WI. Boats shall pass in order Marks WI, W and then WI to port before proceeding to the Gate. In the event of a change of course under RRS 33, Mark WI will be a Mark Boat displaying Mike flag without sound signal.

COURSE 3



Start – WI – W – WO - WI – Gate – WI – W – WO - WI – Finish (Downwind).

The Race Committee will lay Mark W approximately 50 meters to windward of Mark WI. Boats shall pass in order Marks WI, W, WO and then WI to port before proceeding to the Gate. In the event of a change of course under RRS 33, Mark WI will be a Mark Boat displaying Mike flag without sound signal.

ADDENDUM Q

UMPIRED FLEET RACING

This addendum has been approved by ISAF in accordance with rule 86.2 and ISAF Regulation 28.1.3.

Version: Melges 40 – 2017 -01

These Sailing Instructions change the definition Proper Course, and rules 20, 28.2, 44, 60, 61, 62, 63, 64.1, 65, 66, 70, 78.3.

Q1 CHANGES TO RACING RULES

Additional changes to rules are made in instructions Q2, Q3, Q4, and Q5.

Q1.1 Changes to the Definitions and the Rules of Part 2 and Part 4

- (a) Add to the definition Proper Course: 'A boat taking a penalty or manoeuvring to take a penalty is not sailing a *proper course*.'
- (b) When rule 20 applies, the following arm signals are required in addition to the hails:
 - (1) for 'Room to tack', repeatedly and clearly pointing to windward; and
 - (2) for 'You tack', repeatedly and clearly pointing at the other boat and waving the arm to windward.

Q1.2 Changes to Rules Involving Protests, Requests for Redress, Penalties and Exoneration

- (a) The first sentence of rule 44.1 is replaced with: 'A boat may take a One-Turn Penalty when she may have broken a rule of Part 2 (except rule 14 when she has caused damage or injury) or rule 31 or 42 while *racing*.'
- (b) Rule 60.1 is replaced with 'A boat may protest another boat or request redress provided she complies with instructions Q2.1 and Q2.4.'
- (c) The third sentence of rule 61.1(a) and all of rule 61.1(a)(2) are deleted.
- (d) Rule 64.1(a) is changed so that the provision for exonerating a boat may be applied by the umpires without a hearing, and it takes precedence over any conflicting instruction of this addendum.
- (e) Rules P1 to P4 shall not apply.

Q2 PROTESTS AND REQUESTS FOR REDRESS BY BOATS

Q2.1 While racing, a boat may protest another boat under a rule of Part 2 (except rule 14) or under rule 31 or 42; however, a boat may only protest under a rule of Part 2 for an incident in which she was involved. To do so she shall hail 'Protest' and conspicuously display a yellow flag at the first reasonable opportunity for each. She shall remove the flag before, or at the first reasonable opportunity after a boat involved in the incident has taken a penalty voluntarily or after an umpire's decision, or after the incident.

Q2.2 A boat that protests as provided in instruction Q2.1 is only entitled to a hearing if the umpires acknowledge her protest by displaying a "Blue" flag, or there is no signal

from the umpires and no penalty is taken by the protested boat. A boat involved in the incident may acknowledge breaking a rule by taking a One-Turn Penalty as described in rule SI 14.1. If the protested boat does not take a penalty voluntarily, an umpire will decide whether to penalize any boat and signal the decision as provided in instruction Q3.1.

Q2.3 At the finishing line, the race committee will inform the competitors about each boat's finishing place or scoring abbreviation. After this has been done for all boats, the race committee will promptly display flag B with one sound. Two minutes later flag B will be removed with one sound.

Q2.4 A boat intending to

- (a) protest another boat under a rule other than instruction Q3.2 or Q4.2(a), or a rule listed in instruction Q2.1,
- (b) protest another boat under rule 14 if there was contact that caused damage or injury, or
- (c) request redress, or
- (d) protest a boat after the umpires have answered their protest with a "Blue" flag, or
- (e) protest a boat after there is no signal from the umpires and no penalty is taken by the protested boat.

shall hail or contact by VHF the race committee before or during the display of flag B. The same time limit applies to protests under instruction Q5.5. The protest committee may extend the time limit if there is good reason to do so.

Q2.5 The race committee will promptly inform the protest committee about any protests or requests for redress made under instruction Q2.4.

Q3 UMPIRE SIGNALS AND IMPOSED PENALTIES

Q3.1 An umpire will signal a decision as follows:

- (a) A green and white flag with one long sound means 'No penalty.'
- (b) A red flag with one long sound means 'A penalty is imposed or remains outstanding.' The umpire will hail or signal to identify each such boat.
- (c) A black flag with one long sound means 'A boat is disqualified.' The umpire will hail or signal to identify the boat disqualified.
- (d) A blue flag with one long sound signal means 'The umpires do not have the facts required to make a decision'.
- (e) A yellow flag with one long sound means 'A boat is under observation for IM40CR Rule C2.1(b) or C2.1(c).'

Q3.2 (a) A boat penalized under instruction Q3.1(b) shall take a One-Turn Penalty as described in SI 14.1.
(b) A boat disqualified under instruction Q3.1(c) shall promptly leave the course area.

Q4 PENALTIES AND PROTESTS INITIATED BY AN UMPIRE; ROUNDING OR PASSING MARKS

Q4.1 When a boat

- (a) breaks rule 31 and does not take a penalty,
- (b) breaks rule 42,

- (c) gains an advantage despite taking a penalty,
- (d) deliberately breaks a rule,
- (e) commits a breach of sportsmanship, or
- (f) fails to comply with instruction Q3.2 or to take a penalty when required to do so by an umpire,
- (g) breaks IM40CR C2.1(b), C2.1(c) (Helmsperson), an umpire may penalize her without a protest by another boat. The umpire may impose one or more One-Turn Penalties to be taken as described in SI 14.1, each signalled in accordance with instruction Q3.1(b), or disqualify her under instruction Q3.1(c), or report the incident to the protest committee for further action. If a boat is penalized under instruction Q4.1(f) for not taking a penalty or taking a penalty incorrectly, the original penalty is cancelled.

- Q4.2** (a) A boat shall not round or pass a mark on the wrong side. If she does so, she may correct her error as provided in rule 28.2 only if she does so before she rounds or passes the next mark or finishes.
- (b) When a boat breaks instruction Q4.2(a) and fails to correct her error before rounding or passing the next mark or finishing, an umpire may disqualify her under instruction Q3.1(c).

- Q4.3** An umpire who decides, based on his own observation or a report received from any source, that a boat may have broken a rule, other than instruction Q3.2 or Q4.2(a) or a rule listed in instruction Q2.1, may inform the protest committee for its action under rule 60.3. However, he will not inform the protest committee of an alleged breach of rule 14 unless there is damage or injury.

Q5 PROTESTS; REQUESTS FOR REDRESS OR REOPENING; APPEALS; OTHER PROCEEDINGS

- Q5.1** No proceedings of any kind may be taken in relation to any action or non-action by an umpire.

- Q5.2** A boat may not base an appeal on an alleged improper action, omission or decision of the umpires or the protest committee. In rule 66 the third sentence is changed to 'A party to the hearing may not ask for a reopening.'

- Q5.3** (a) Protests and requests for redress need not be in writing.
- (b) The protest committee may take evidence and conduct the hearing in any way it considers appropriate and may communicate its decision orally.
- (c) If the protest committee decides that a breach of a rule has had no effect on the outcome of the race, it may impose a penalty of points or fraction of points or make another arrangement it decides is equitable, which may be to impose no penalty.

- Q5.4** The race committee will not protest a boat, except following a report under rule 43.1(c) or 78.3.

- Q5.5** The protest committee may protest a boat under rule 60.3. However, it will not protest a boat for breaking instruction Q3.2 or Q4.2(a), a rule listed in instruction Q2.1, or rule 14 unless there is damage or injury.



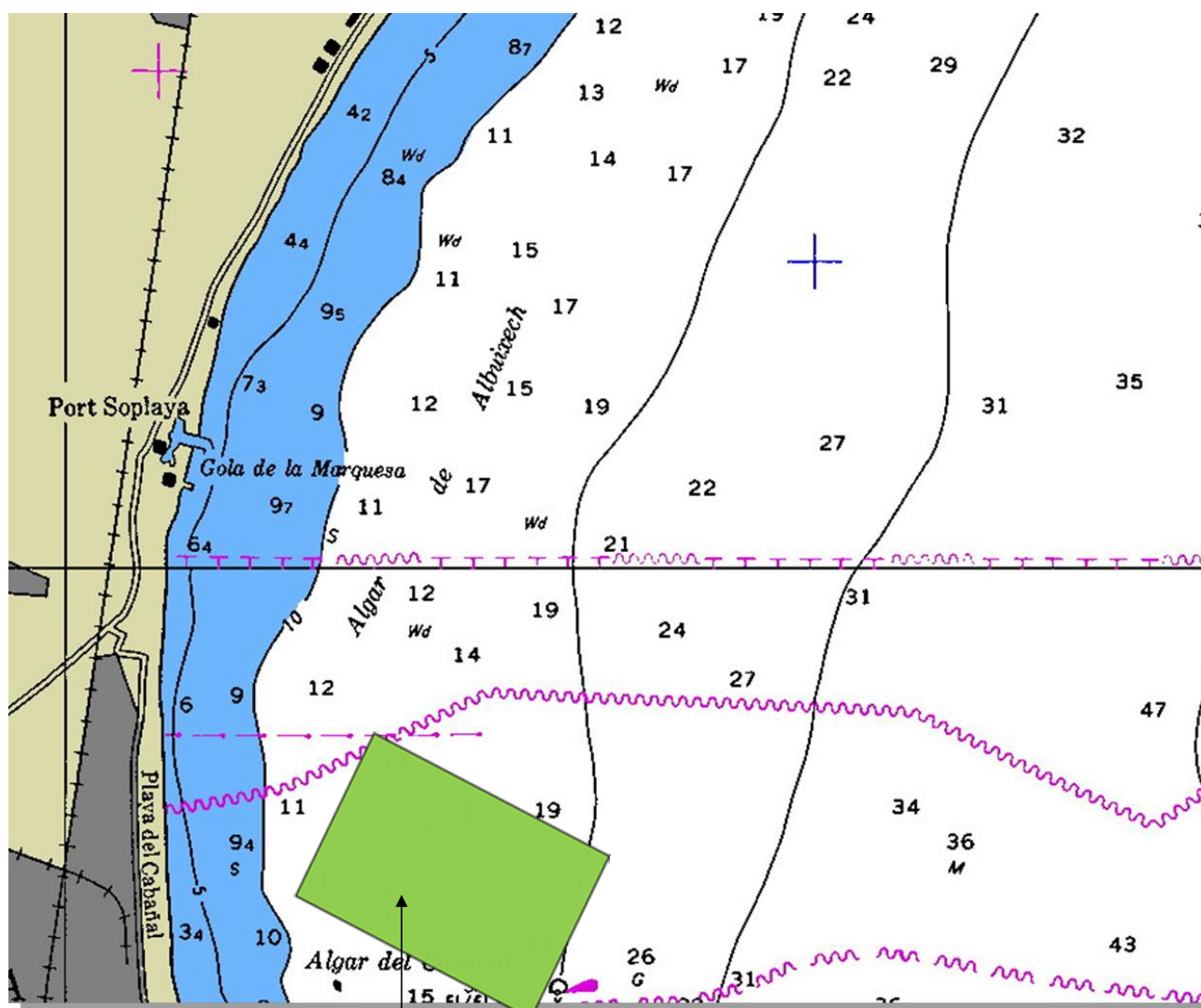
MINISTERIO
DE FOMENTO

SECRETARÍA GENERAL
DE TRANSPORTES

Dirección General de la
Marina Mercante

Capitanía Marítima de Valencia

ANEXO 1 ÁREA DE REGATA



Race area